

# The digital university of the future

Strategy for digital transformation 2018–2024





OsloMet will be leading in terms of introducing new technology, innovative solutions and efficient work methods.

# Working Life Portal

Interaction from education to employment

VISION OF WORKING LIFE PORTAL

**THE MOST IMPORTANT PLATFORM  
FOR INTERACTION FROM  
EDUCATION TO EMPLOYMENT**



LOG IN

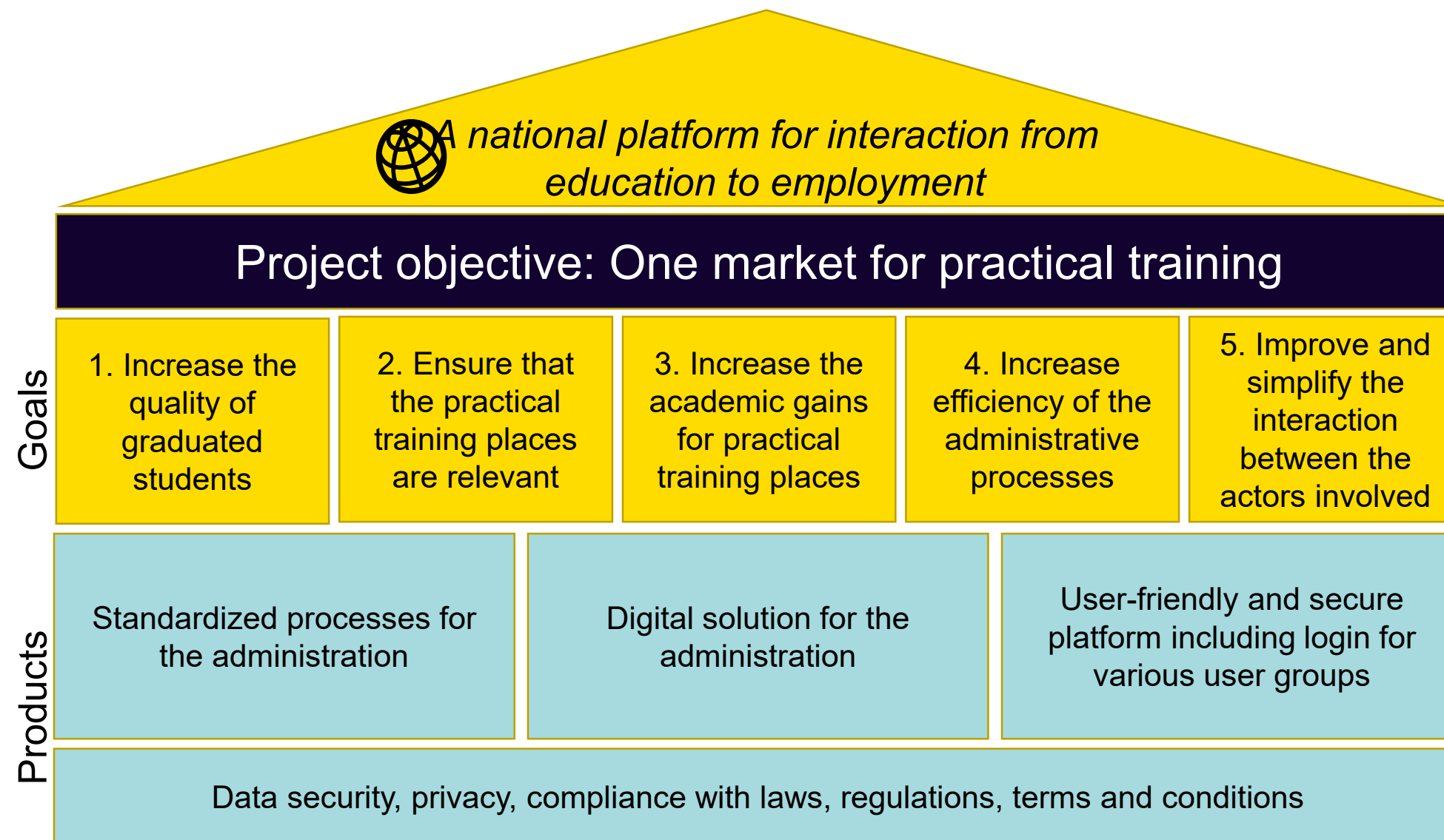
# Match. Chat. Date.

By clicking Sign Up, you agree to our [Terms](#). Learn how we process your data in our [Privacy Policy](#) and [Cookie Policy](#).

SIGN UP

**SWIPE LIFE**

# The project vision is further broken down into goals and products



**The overall goal is to develop a interaction portal which improves experiences for all parties involved in practical training.**

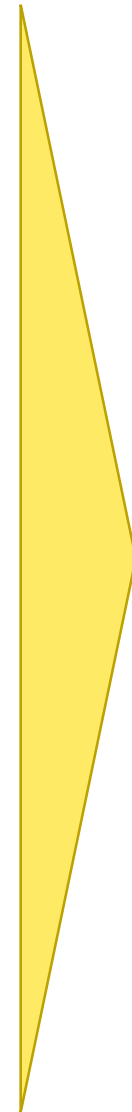


Administrative tasks related to organizing practical training are mostly of **manual** character and are **rarely standardized**



Students experience the benefit of practice, at the same time it feels to them like a **lottery**

*Today*



**Interaction portal** for students and working environment



**Reduced use of resources** and **improved experiences** for students, staff, practice placement



**Increased quality** of studies which contain practical training

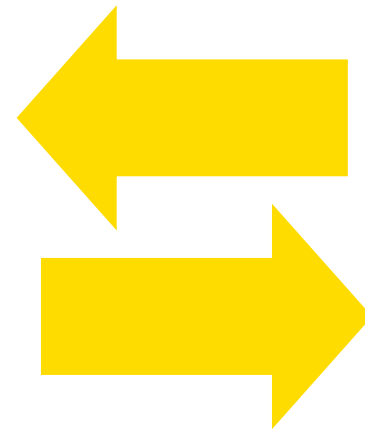
*Working Life Portal*

## God experiences and benefits for all parties involved



### Students

- ✓ Increase the quality of graduates
- ✓ Ensure that the practical training places are relevant



### Educational institution

- ✓ Increase efficiency of administrative processes and their quality
- ✓ Simplify and professionalize the interactions between actors involved



### Employment/practical placement

- ✓ Increase the academic gains for practical training places
- ✓ Meeting with potential employees



# The project started as an internal initiative at OsloMet and ended up with external funding

1

## Internal group

An internal group at OsloMet identified the need for coordination of administrative processes regarding practical training

2

## Preliminary project

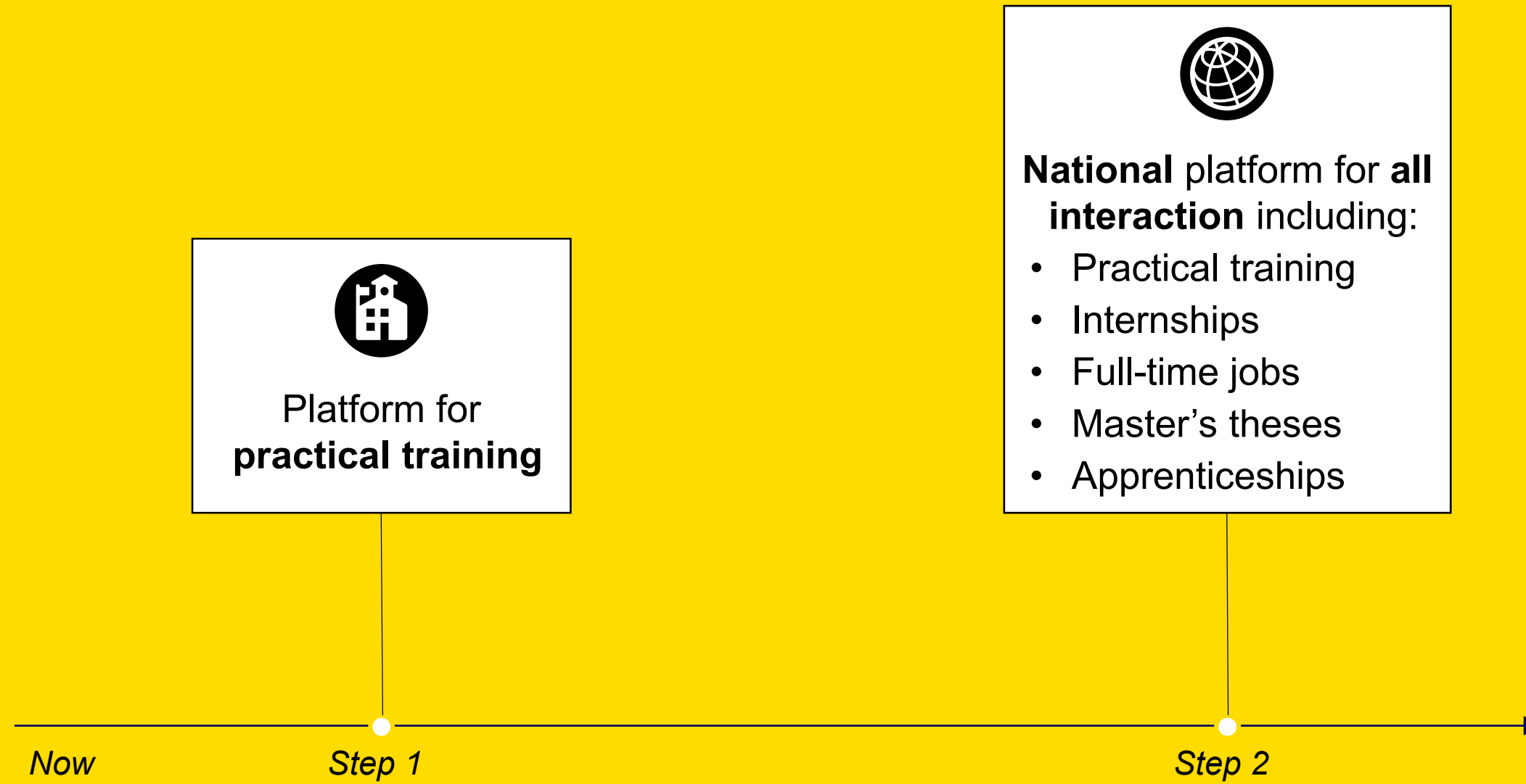
OsloMet conducted a preliminary project to identify the user demands for the various actors involved in practical training

3


## Funding secured

The analysis from the preliminary project resulted in an application for funding to Difi. 7.65mNOK is granted OsloMet and the development of Arbeidslivsportalen

# STAGE



# METHODOLOGY



It is critical to fully understand the users demands prior to developing the technical solution

# Design thinking

*Design thinking starts by focusing on the people for insight*

*You define the problem or challenge, and you get new perspectives*

*We work in teams with complex backgrounds to ensure that we have the breadth to solve complicated problems*

*Så tester vi for å se om løsningen har livets rett*

*We explore the possibilities, without prejudice, to create room for an open exchange of ideas*

*Design thinking explores and models ideas for solutions. We learn while we work*

*Then we think together about how to isolate potential solutions which we adjust and improve*



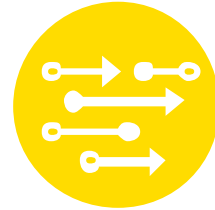
## Insights - elements that should be included in the platform



Secure login  
including  
access control  
of various user  
groups



Profiles for both  
students and  
practical  
training places



Automatic  
matching of  
students and  
practical  
training places



Digital  
assessment  
and evaluation



Secure storage  
and sharing of  
sensitive data

## Arbeidslivsportalen.

You have received a  
praksis place at  
"St. Hanshaugen omsorgssenter"



St.hanshaugen omsorgssenter is a nursing home located in pleasant environments in center of Oslo, next door to the park at St. Hanshaugen... [Read more](#)

Duration of praksis activity  
from 12.12.2019 to 20.12.2019

Your supervisor  
Bente Berntzen  
Bente@unicare.no  
+47 98 87 30 83

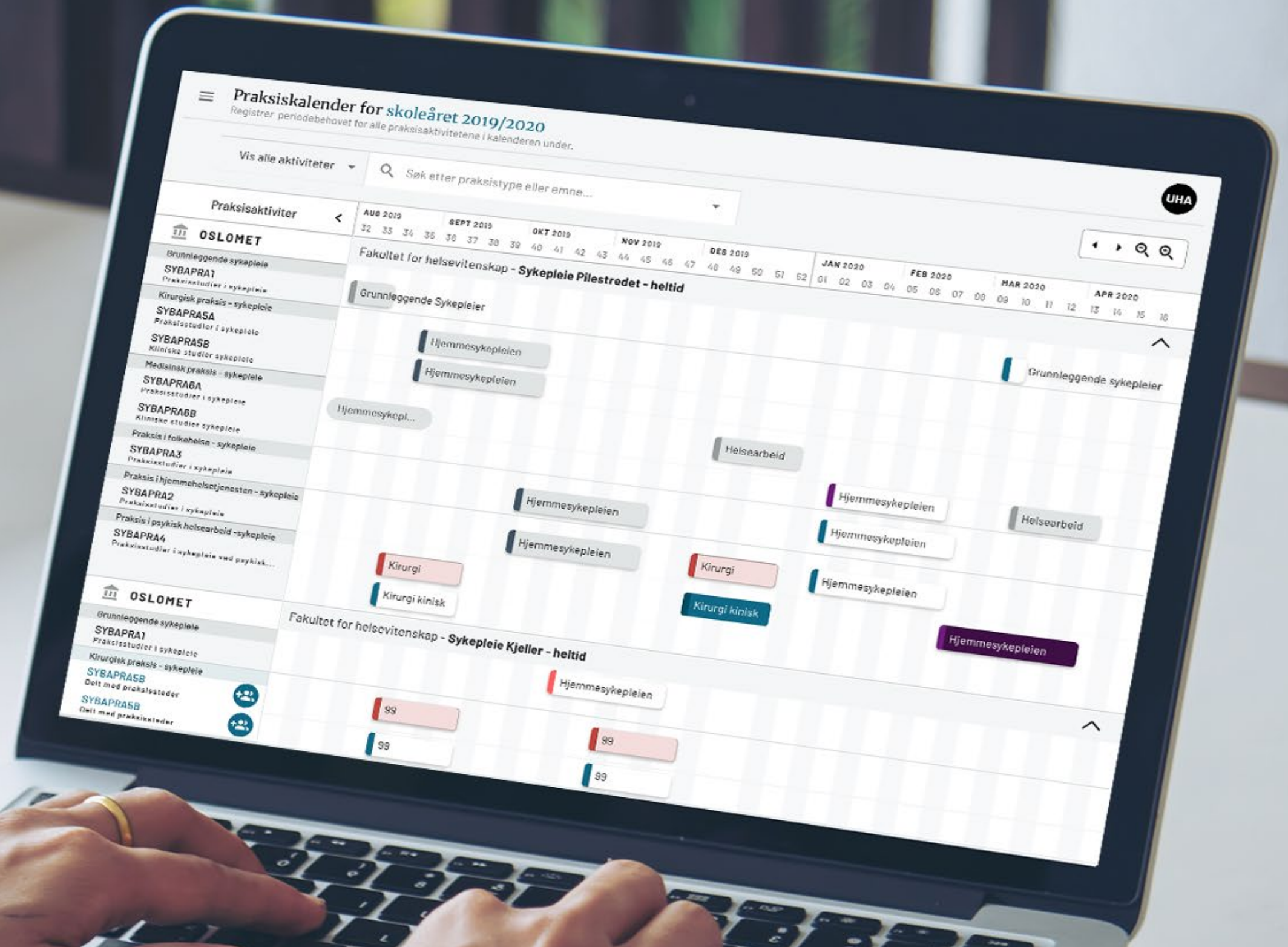


[Add to contacts](#)

[Add to Calender](#)

OK

**Information  
when needed**



- Prognosis practice activity
- Overview capacity
- Distribution and matching student – practice activity and notifications
- Students: wishlist, notifications

Arbeidslivsportalen

Language

Praksisriss for høsten 2019 - våren 2020

Publiser praksisriss

HE-institusjon

Studieprogram: Søk eller velg

Fakultet: Velg

Studiested: Velg

eller: Søk etter praksistype, emne eller periode

Viser praksisriss for: Fakultet for helsevitenskap

Tidslinje: Liste

Fakultet for helsevitenskap (HV) - Kjeller, Skedsmo

Bachelorstudium for sykepleie (SYPLGR)

Godkjent av praksiskoordinator

1. studieår

Grunnleggende sykepleie

SPH-PRA111 - Sykepleierens funksjon og oppgaver innen grunnleggende sykepleie

ca. 100 studenter

Alle studenter: Fra \_\_\_\_\_ Til \_\_\_\_\_

2. studieår

Medisin

SPH-PRA211 - Sykepleierens funksjon og oppgaver innen medisinsk praksis

ca. 100 studenter

Klasse A: + Legg til periode

Klasse B: + Legg til periode

Klasse C: + Legg til periode

Prototype – Register/change periode for practise

Arbeidslivsportalen

Language

Praksisplasser 2019/2020

Studenter blir fordelt på praksisplasser fra 1. mars 2019.

Field-institusjon

Praksissteder: Vis alle

S302 Hematologi / Infeksjon

Lise Ledelsen • lised@ahus.no

Tar imot studenter:

Praksistyper: Grunnleggende sykepleie, Helsefremmende og forebyggende arbeid, Medisin

Høsten 2019

Uke 35-40: 0

Uke 41-49: 0

Våren 2020

Uke 3-5: 0

Uke 5-11: 0 stk

Uke 13-22: 0 stk

Prototype - Register capacity



OSLOMET



Praksisweb

Praktikportalen



Elektronisk studentevaluering

Digitalt valg av praksis (DVAP)



UNIT

Cooperation

OSLOMET



*«Students and universities must become more relevant for working life.»*

**Iselin Nybø**

Minister of Research and  
Higher Education  
(Liberal Party).



OSLOMET

Thank  
you!

OSLO METROPOLITAN UNIVERSITY  
STORBYUNIVERSITETET

**Contact: [marbra@oslomet.no](mailto:marbra@oslomet.no)**

**Blog: <https://arbeidslivsportalen.oslomet.no>**